

Our Ref: JP/JAS/Pupil Services

12<sup>th</sup> November 2024



Wednesfield Academy  
[www.wednesfieldacademy.co.uk](http://www.wednesfieldacademy.co.uk)

Dear Parent/Carer

Please find attached to this letter the pupil services newsletter which provides some information about the team in school. We are very proud of the provision Wednesfield Academy can offer our pupils and have a number of student success stories from those who have been supported by the school.

If you have any questions regarding this information please contact your child's Head of House, the Sixth Form office, or Mrs Bingham (Deputy Headteacher) by calling 01902 558222 or alternatively please email via [postbox@wednesfieldacademy.co.uk](mailto:postbox@wednesfieldacademy.co.uk).

Yours faithfully

A handwritten signature in black ink, appearing to read 'John Phillips', is written over a light blue background.

Mr Phillips  
Headteacher



Wednesfield Academy  
Lichfield Road  
Wednesfield  
Wolverhampton  
West Midlands  
WV11 3ES



**Matrix**  
Academy Trust  
EDUCATION WITHOUT EXCEPTION

01902 558222



Wednesfield Academy



[wednesfield.academy](http://wednesfield.academy)





Wednesfield Academy

# PUPIL SERVICES

# WEDNESFIELD

NOVEMBER  
2024

## What Do We Do?

### PUPIL SERVICES AT WEDNESFIELD ACADEMY

The Pupil Services team is dedicated to supporting our pupils, intervening at the earliest stages to avoid situations escalating. We build on individual confidence and resilience through the provision of emotional, behavioural, pastoral and professional support for our pupils to ensure they are successful.

### Referral Process

Heads of Houses and Safeguarding refer pupils to Pupil Services and pupils are discussed on an individual basis. The Pupil Services team then allocate pupils to the most appropriate support.

### Our Services

- Restorative conversations
- Reflective work
- Educational programmes and workshops
- 1:1 Mentoring
- Mental Health support sessions
- Counselling sessions
- External referrals

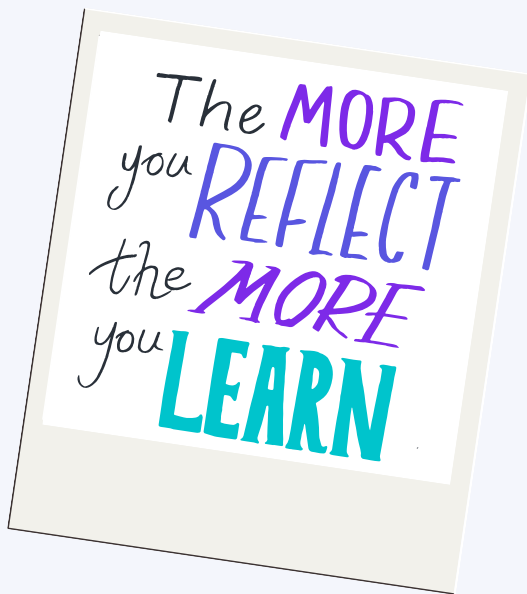
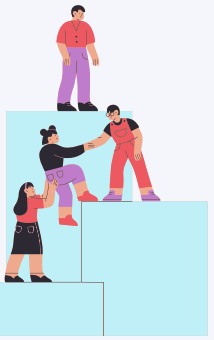


**Supporting Our Pupils From The  
Very Beginning**

### Monitoring

Pupils complete a survey on entry to their allocated support. This provides us with a baseline to work from. They then complete the same evaluation at the end of their block of sessions. This, along with other data, informs decisions for next steps.

# PUPIL SERVICES MEET THE TEAM 2024



## Reflection Room and Behavioural Mentoring

### MR BUTLER

Mr Butler is based in our Reflection Room. He conducts reflective conversations with pupils visiting Reflections. In addition, Mr Butler provides individual mentoring for pupils. Mr Butler is focused on improving pupil's overall behaviour and attitude towards school.

## Success Centre

### MISS HANNON

Miss Hannon is our Success Centre manager. She provides preventative and reactive workshops which support pupils with behaviour modification, emotional regulation and other targeted areas.



## Pastoral Intervention

### MISS OLDHAM

Miss Oldham leads the L.I.F.E Group (Learning from Independent Functional Experiences). The sessions develop pupils life skills and aspirations through a range of practical workshops and activities. The groups build on their teamwork and communication during the sessions.



## Mental Health Support Worker

### MISS PATEL

Miss Patel works one to one with pupils to discuss their mental health. The role supports pupils with social, emotional and mental health issues. The issues are addressed through practical activities and talking therapy.

## School Counsellor

### MISS MAHLI

Miss Malhi provides counselling for pupils on a one to one basis. Her training and experience enables her to work effectively with more complex mental health issues, and pupils who have experienced trauma.

## Wider Team

### MRS BINGHAM

Deputy Headteacher and Pupil Services Lead

### MRS ROBERTS

Assistant Headteacher and Designated Safeguarding Lead

### MS HANSON

Assistant Headteacher

### MS WILLIAMS

SENDCo

### MRS WORRALL

Safeguarding Manager